

CARVIN

Prices good through April 30, 2012

NEW!
ALLAN HOLDSWORTH
HH SERIES GUITARS
PG 12

the
NAMM
show¹²
UNVEILING

PG 34



NEW!

DC800 8-STRING PG 13

CS624 24-FRET CA SINGLE PG 11

MB210 MICRO BASS AMP PG 38

EQ230 & EQ430 PG 46

800.854.2235
CARVIN.COM

THE STORY OF A LEGACY

Exactly 13 years ago, Steve Vai and Carvin launched the Legacy amplifier at Winter NAMM in Los Angeles, Carvin's long relationship with Steve started even further back when he was playing with Frank Zappa. Carvin presented Steve with his first ever full-stack amp which was the X100B. "I just put it in my living room and stared at it" as Vai recalled in interviews available on CarvinChannel.com.

In the late 90's Carvin started discussions with Steve about designing an together. In late 1998 prototypes of the first Legacy amps had been completed and Carvin was able to tease the public with magazine ads released prior to the official unveiling at Winter NAMM 1999. Steve's vision for the Legacy was to develop an amp that didn't have the brittle or harsh sound associated with other amps. The Legacy was conceived as a warm sounding amp that had a very musical clean channel and a 2nd channel that gave Steve his ideal distortion tone. Guitarists of every genre of music have played Legacy amps due to the unique warmth this amp offers.

In 2000 at the Musikmesse trade show in Germany, the Legacy was awarded the M.I.P.A. Award for "Outstanding Guitar Amplifier". The Legacy was voted #1 in this category by 22 journalists from the world's leading music publications.

In 2009 Carvin and Steve launched the Legacy II, which added a 3rd channel and a master volume. The 3rd channel offered tone in the realm in-between the clean and drive channel. The Master Volume functioned like a true master volume should. It simply lowered the volume of the amp rather than affect the gain structure of the preamp. Once again, a number of artists discovered the incredible tone the Legacy offered and became die-hard Legacy players.

13 years after the original Legacy was released, Carvin will be unveiling the Legacy III at Winter NAMM 2012 in Anaheim California on January 20th. We will also make an online announcement to the public via Carvin.com, CarvinChannel.com, Youtube and Facebook.



A few Legacy magazine ads from the past



1998 Teaser ad



1999 Debut



2000 M.I.P.A. Award



2005 Ad

Make a joyful noise unto the Lord, all of the earth; make a loud noise and rejoice, and sing praise. Sing to the Lord with the harp, and the voice of the psalm. Psalm 98:4-5



NO
INTEREST FINANCING FOR
6 MONTHS

IF PAID WITHIN 6 MONTHS!
Minimum monthly payments required.
Valid on purchase of \$750 or more
when you use your Carvin Credit card.

Apply at Carvin.com or call 1-800-854-2235. You can immediately use your new Carvin Card to order gear today, subject to credit approval by GE Money Bank!

CARVIN NEWS

Allan Holdsworth and the NEW HH guitar

Carvin has been working with guitarist Allan Holdsworth for almost 2 decades. In the last few years, Allan had challenged Carvin to create a new headless guitar as he longed for the tone, comfort and playability of his signature Carvin guitars, but without a headstock.

Carvin's Custom Shop reviewed a number of bridge systems that would allow for a headless guitar. There were many hurdles but persistence and patience on behalf of both Allan and Carvin has paid off.

Carvin is proud to offer the HH1 and HH2 Allan Holdsworth guitars. The guitars feature an all new bridge system available in both fixed and tremolo flavors. The guitar features Allan's rear neck profile which is slightly rounder than other Carvin guitars. It also features Allan's H22 Signature Humbuckers. By eliminating the headstock, the guitar's overall size dramatically reduces to what many consider to be a "travel size" guitar. As with all Carvin electric guitars, the HH series can be ordered with a vast selection of wood, color and pickup combinations.



New Gear for the New Year

Carvin's California Single is now available with 24 frets. The CT624 has paved the way for a CS624 as players continue to request this from the Custom Shop.

In late 2011, Carvin unveiled the new DC800 8-string guitar. 8-string ERG's (Extended Range Guitars) are popping up in many new prog-metal bands. With only a few brands offering an 8-string guitar, Carvin has the edge over the competition by offering a USA made 8-string with all of our Custom Shop offerings.

Carvin is now offering the MB210 as an addition to our popular Micro Bass amps. As the model number indicates, this is a 2x10" combo that utilizes the same amp as the other MB combos. The MB210 offers the tight tone associated with 10" drivers while remaining portable and lightweight.

Carvin's line of X-Drive™ processors are expanding into dedicated digital EQ. The EQ230 and EQ430 are 2 and 4 channel digital EQs respectively. Both offer 30 bands of precision digital EQ processing ideal for both stage monitors or front-of-house. The X-Drive™ software allows for easy control from a laptop and offers the convenience of storing and recalling various settings.



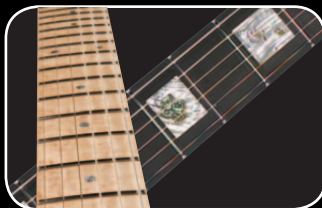
Applies to purchases of Carvin products made on a Carvin consumer credit card account. Under the promotion, no finance charges will be assessed on the promotional purchase as long as (1) you pay the promo purchase amount in full within 3 months (the "promo period") and (2) you pay, when due, the minimum monthly payment on your account, which includes a required minimum monthly payment on the promo

purchase. If you fail to satisfy either of the above conditions, all special promo terms will be terminated and finance charges will be assessed on the promo purchase amount from the date of the purchase. Optional credit insurance/debt cancellation charges on your promo purchase are not deferred and are not subject to the promotional terms. Standard account terms apply to non-promotional purchases. Variable APR is

23.99% as of June 28, 2005. Fixed APR of 26.99% applies if the minimum payment is not made by the payment due date two times in any six consecutive billing periods. Minimum finance charge is \$1.00. Existing cardholders should see their credit card agreement for standard terms. Offer is subject to credit approval by GE Money Bank.



Your choice of a fixed bridge, Tune-o-matic bridge, Wilkinson tremolo, Original Floyd Rose or Bigsby.



Ebony, Rosewood, Bird's Eye & hard rock Maple fingerboards are available along with your choice of inlays: dot, block and diamond shapes available in white Mother of Pearl & Abalone.



Various headstock shapes along with your choice of exotic woods. Sperzel locking tuners, graphite nut and the tilt-back headstock all contribute to pure tone and rock-solid tuning stability. No string tree needed for clean solid open notes!



Your choice of 10", 12", 14" & 20" fingerboard radii along with your preference of 3 different Nickel-Silver and 3 Stainless Steel fretwire profiles.



Carvin Classic Alnico-V humbuckers offer incredible warmth and definition. Many optional models and colors to choose from.



With Carvin's custom shop you now have more choices than ever to create your own custom instrument. In the last couple of years we have added options like bird's eye maple and rosewood fingerboards along with stainless steel

frets in both standard and jumbo sizes. New deep stained finishes are available to compliment the beauty of our highly figured maple tops. To enhance the tone of our guitars more models of Carvin pickups are available than ever before not to mention the acoustic bridge options that are offered for many of our instruments. However, more important than our growing list of options is our commitment to building high quality guitars.

Our modern 82,000 square foot plant in San Diego is equipped with the finest guitar building machinery in the industry. The use of high quality tone woods and our constant improvement in manufacturing methods are an ongoing quest at Carvin. Several years ago we began to cycle all of our necks and fingerboards through a long conditioning process in our de-humidification chambers. What this does is remove any possible stress in the wood. Stress in the wood is what causes your neck to warp or twist, and it may not fully develop for months or years after an instrument is built. This painstaking extra step is one of the reasons why our guitars and basses are known for their longevity and consistent playability.

If Carvin guitars were available in retail stores, you would pay up to three times more than our factory direct prices. By selling direct, Carvin not only gives incredible value but also provides you with a direct connection to the guitar builder. This is something you do not get when purchasing retail. With the best build up times in the industry along with our risk free 10-day money back guarantee, there has never been a better time to order your Carvin Custom Shop instrument.

5 Year Warranty

All Custom Shop guitars & basses carry a 5 year limited warranty against manufacturing defects.



Carvin installs and registers the SNAGG™ microchip in every guitar and bass (\$50 value). The hidden micro-chip carries its own registration number documenting your ownership. If your instrument is ever lost or stolen, once scanned, will identify the rightful owner. For more visit snagg.com.

10 day money back guarantee
on Carvin Custom shop instruments



Carvin.com features an inventory list of guitars and basses ready to ship!

Optional Acoustic-Electric System

Now available on M-bridge and Floyd Rose

Acoustic FT6 fixed bridge.
The FA series option is available in a fixed or tremolo version on the following models: Contour 66, TL60, DC127, DC400.

Dual outputs allow you to separate the electric & acoustic signals, or combine them into one jack

CUSTOM SHOP FEATURES AND OPTIONS

With more choices of woods, finishes, and options than ever before you can order most Carvin models in over 50,000 different combinations and not have the same instrument built alike. What's even better, Carvin's custom shop is building each instrument to the exact detail and shipping it within 6 weeks (on most orders).

This is made possible by our efficient method of keeping all components such as necks, fingerboards, pickups and hardware in stock. For help in choosing the best options to build your dream machine, call and talk with one of our friendly and knowledgeable experts. They'll be glad to help you build your dream machine. Or build your guitar online at Carvin.com

STANDARD FEATURES FOR MOST CARVIN NECK-THROUGH-BODY GUITARS

- Maple neck-through-construction (AC175, AC275, AE185 use mahogany neck-through)
- Smooth neck-to-body heel for effortless playability to the last fret
- Tone enhancing alder wood body sides (some models standard with mahogany)
- Premium grade Ebony fingerboard
- Precision medium-jumbo (.048 tall x .103 wide) hard alloy German fretwire by Jescar is super long lasting and polished for effortless string bending and precise intonation.
- Scale Length: All neck through guitars 25" (Holdsforth, Seven String & Bolt: 25 1/2")
- Dual action truss rod
- Sperzel™ locking tuners
- Graphite nut with teflon helps keep guitar in tune.
- Strings: Elixir Nano Web .010 - .046 gauge super long lasting strings
- Chrome hardware standard
- Standard Colors: Jet Black, Classic White, White-White, Vintage Cream, Ferrari Red, Tung Oil Finish, Clear Gloss, Clear Satin

OPTIONS — GUITARS AND BASSES

Exotic Woods and Finishes

NOTE: You can add a translucent color to the gloss wood finishes below.

(example NMAH + TT = Mahogany wood with translucent tobacco sunburst gloss finish)

ASH	Swamp Ash body	..\$80
MAH	Maple neck & mahogany body	..\$100
NMAH	Mahogany neck & mahogany body	..\$200
WAL	Maple neck & walnut body	..\$100
NWAL	Walnut neck & walnut body	..\$200
KOA	Maple neck & koa body	..\$300
NKOA	Koa neck & koa body	..\$600
TC	Maple neck & body (increases instrument weight by 1 pound or more)	..\$100
MT	Maple top (Acoustics: MTA \$100)	..\$160
HT	Mahogany top (Acoustics: HTA \$120)	..\$200
KT	Koa top (Acoustics: KTA \$240)	..\$400
WT	Walnut top (Acoustics: WTA \$120)	..\$200
FW	Figured walnut top, book matched (Acoustics: FWTA \$240)	..\$400
FK	Flamed koa top, book matched (Acoustics: FKTA \$400)	..\$800
SM	Curly Spalted Maple top, book matched (Acoustics: SMTA \$400)	..\$800
UM	Burl Bird's Eye Maple Top (Acoustics: UMTA \$400)	..\$800
CG	Clear high gloss finishN/C
CS	Clear matte satin finishN/C
TF	Tung oil satin finishN/C
BST	Black burst edge over optional wood or color	..\$60
CST	Cherry burst edge over optional wood or color	..\$60
SST	Sunset burst edge over optional wood or color	..\$60
DTS	Deep Triple step stain (only available with flame or quilted maple top)	..\$160

Body and Neck Options

L	Lefthand model (certain models and options not available)N/C
RB	Fully rounded body edges	..\$80
SMM	5-piece Laminated maple neck with two maple stripes NEW!	..\$180
SMW	5-piece Laminated maple neck with two walnut stripes	..\$200
SM	5-piece Laminated maple neck with two koa stripes	..\$240
SWM	5-piece Laminated walnut neck with two maple stripes	..\$240
SH	5-piece Laminated mahogany neck with two maple stripes	..\$300
SK	5-piece Laminated koa neck with two maple stripes	..\$400
FMN	Flame Maple Neck (Ebony fingerboard standard)	..\$400
NS	Optional 5-piece neck is covered by optional figured top	..\$80
TN	Tung oil finish back of neck	..\$120
CNS	Clear Satin back of neck (natural wood finish)	..\$120
PSN	Painted Satin back of neck (matches body color)	..\$120

Headstock Options

SBH	SB4000 style headstock (available for 6 string guitar, 4 & 5 string basses)	..\$40
TH	Traditional headstock with 3 + 3 tuners as on AE185, 2 + 2 on 4-string basses	..\$40
CTH	CT6 headstock shape with 3 + 3 tuners as on CT6, 2 + 2 on 4-string basses	..\$40
PH	Headstock to match body color	..\$60
BPH	Black painted headstock	..\$60
KPH	Koa headstock overlay	..\$60
WPH	Walnut headstock overlay	..\$60
FWPH	Figured Claro Walnut headstock overlay	..\$80
FKPH	Flamed Koa headstock overlay	..\$100
SMPH	Spalted Maple Headstock Overlay	..\$100
UMPH	Burl Bird's Eye Maple Headstock	..\$100
BMPH	Bird's Eye Maple Headstock painted to match body	..\$60
BMNH	Bird's Eye Maple Natural Clear Headstock	..\$60
FPH	AAAA Flamed maple headstock overlay	..\$80
QPH	AAAA Quilted maple headstock overlay	..\$80
ABL	Abalone Carvin headstock logo	..\$60
GL	Gold plated metal Carvin logo on Headstock (as on CT6 Carved Top)	..\$40

For more options, see guitar builder at carvin.com. (Certain options not available on some models)

Fingerboard Options

RWF	Rosewood fingerboardN/C
MF	Maple fingerboard with black dots (N/A with block or sig. inlays)N/C
BMF	Bird's Eye maple fingerboard with black dots (N/A with block or sig. inlays)	..\$60
FMF	Flame maple fingerboard w/ black dots (N/A with block or sig. inlays)	..\$120
R10	10" fingerboard radius (N/A on H2, HF2, CL450, NS1 or 5 & 6 string basses)	..\$80
R14	14" fingerboard radius (N/A on CL450 or NS1)	..\$80

Inlay Options

NIN	No inlays on top of fingerboard (side dots only)N/C
ABD	Abalone dot inlays	..\$40
MP	White Mother-of-pearl block inlays	..\$120
AB	Abalone block inlays (as on DC400)	..\$160
DMP	White Mother-of-pearl diamond inlays	..\$60
DAB	Abalone diamond inlays	..\$80
MPS	White Mother-of-pearl signature inlays	..\$120
ABS	Abalone signature inlays	..\$160

Fretwire Options

6100	Jumbo fretwire .055 tall x .110 wide	..\$30
6130	Low profile fretwire .036 tall x .106 wide	..\$30
STF	Stainless Steel frets, med-jumbo .048" tall x .103" wide	..\$80
STJF	Stainless Steel frets, jumbo .055" tall x .110" wide	..\$80
STRF	Stainless Steel frets, regular (Vintage Fender size).043" tall x .080" wide	..\$80

Pickup and Electronic Options

404	White coils with black bezel	..\$10
405	White/black coils with black bezel	..\$10
S22J	Metal covered neck pickup (matches guitar hardware color)	..\$20
S22B	Metal covered bridge pickup (matches guitar hardware color)	..\$20
31	Add one dual/single coil mini switch	..\$20
32	Add two dual/single coil mini switches	..\$40
36	Add phase mini switch (places pickups out of phase for thinner tone)	..\$20
AC	Active Electronics as used on DC400 (not available on all models)	..\$120

Hardware Options

BC	Black hardware	..\$60
G	Gold plated hardware	..\$100
WK	Wooden knobs (Rosewood)	..\$10
SPW	White Pearl Sperzel Tuning Buttons	..\$40
PK	Metal knobs with white Pearl inlays (black knobs have black pearl inlays)	..\$20
AK	Metal knobs with Abalone inlays (chrome, gold or black)	..\$20
IVN	Graphtech Ivory Tusq nut	..\$10
LN	Lock nut for Floyd Rose tremolo (installed on Floyd Rose only)	..\$60
SS	String Saver Graphite Saddles (guitars with FT6 & FT7 fixed bridge only)	..\$40
SL	Straplocks by Dunlop™	..\$20
ETR	Engraved truss rod cover (personalized with your name)	..\$20

BASS OPTIONS

FI	Fretless fingerboard with white inlaid fret lines	..\$80
FID	Fretless fingerboard with white inlaid fret lines & dot inlays	..\$100
HS	Hipshot™ bass detuner installed	..\$100
HB2	Replace J99A bridge pickup with HB series humbucker	..\$60
HB2N	Replace J99A neck pickup with HB series humbucker (must also order HB2)	..\$60
SP2	2 Soapbar humbuckers	..\$50
STS	Stainless Steel Round Wound strings (replaces nickel round-wounds)	..\$10
FWS	Flat-wound bass strings (replaces standard Nickel round-wounds)	..\$20
409	Cream colored J99A or H50A pickups	..\$10

Order Now & take 50% Off all options & finishes

OPTIONAL PICKUP COLORS \$10

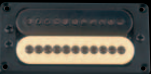
Black Pickups are Standard



Cream coils & bezel (402)



Cream coils & black bezel (403)



Cream & black coils & black bezel (406)



Cream & black coils & cream bezel (407)



Black coils & cream bezel (408)



ETR optional engraved truss rod cover makes a great personalized addition to your custom guitar. Specify 1 or 2 lines. Up to ten characters per line.

WOODS AND FINISHES

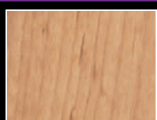
**AVERAGE BUILD-UP TIME FOR YOUR
CUSTOM SHOP INSTRUMENT IS 5 TO 9 WEEKS!**
1-800-854-2235

OPTIONAL BODY WOODS (SEE PRICE LIST)



Hard Rock Maple
(N. East USA)

We use premium Eastern hard rock maple for our necks because of its time proven strength and stability. As a body wood, hard rock maple being very heavy and dense delivers a bright sustaining tone.



Alder (North West USA)

This medium light-weight wood is the standard body wood for most Carvin solid body guitars and basses. Alder is a classic tone wood – used in solid body electric guitars since the '50's.



Genuine Mahogany

Genuine Mahogany is a classic tone wood. Denser and heavier than Alder and can add over 1 pound to your instrument. Mahogany along with our flamed or quilted maple tops, give great sustain and warmth.



Swamp Ash
(Southern USA)

Swamp Ash, which comes from Southern swamps is about the same weight or slightly lighter than Alder. It is light in color with rich grain patterns and delivers slightly less midrange with full low-end and nice singing highs.



Black Walnut
(Eastern USA)

Black walnut has medium dark beautiful grain patterns, is heavier than Mahogany and can add up to 2 pounds to your instrument. It has a warm, growling low end and a bright top end.



Koa
(Hawaiian Islands)

Koa is similar in weight or slightly heavier than Alder. It has warmth and sustain similar to Mahogany and possesses the clear open tone of Alder. Koa looks wonderful whether you choose a tung oiled, satin or gloss finish.

OPTIONAL BODY TOP WOODS (SEE PRICE LIST)



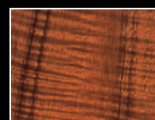
AAAA Flamed Curly Maple
(North West USA)

Flamed Maple produces singing highs with a tight low end. Sounds wonderful over our standard Maple neck/Alder body or Mahogany.



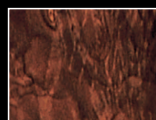
AAAA Quilted Maple
(North West USA)

Quilted Maple produces similar tones to Flamed Curly Maple. The quilted figure can vary from large to smaller pockets.



Flamed Curly Koa
(Hawaiian Islands)

Besides its exotic Hawaiian Island appeal & rarity, a guitar built with a Flamed Curly Koa top will give added sweetness and pronounced midrange.



Figured Claro Walnut (California)

A Claro walnut top will add a unique look and brighter tone in the upper register with a darker growling low end. The figure can have variations with shades of brown and black.



Spalted Curly Maple
(Western Canada)

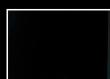
Carvin uses the finest premium 4A Curly Spalted maple available. This exotic wood comes from dying-standing trees, which gives this wood its unique old-world look.



Cedar (Canada)
for acoustics

Cedar has a very warm tone. It has been used for hundreds of years on classical and flamenco guitars. It is the standard top on Carvin's CL450 nylon string guitar.

STANDARD SOLID COLORS N/C



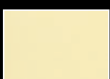
B Jet Black



W Classic White



WW White White



VC Vintage Cream



R Ferrari Red



SG Seafoam Green

METALLIC COLORS \$100 \$50

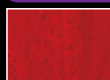


PB Pearl Blue



CR Candy Red

OPTIONAL TRANSLUCENT FINISHES \$60 \$30 (SHOWN ON STANDARD ALDER)



TR Cherry Red



TP Purple



TG Emerald Green



TE Green Burst



TB Sapphire Blue



TL Blue Burst



BM Blue Mist



TPB Translucent Pearl Blue



TY Vintage Yellow



TS Cherry Burst



TT Tobacco Burst



TD Classic Burst



TU Sunset Burst



THY Honey Burst



RG Radiation Green

OPTIONAL FLAME MAPLE FINISHES \$360 \$180

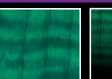
Printed representations of paint & wood colors may vary slightly to the real instrument.



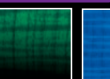
FTR Crimson Red



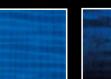
FTP Purple



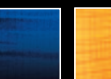
FTG Emerald Green



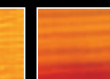
FTE Green Burst



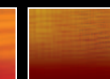
FTB Sapphire Blue



FTL Blue Burst



FTY Vintage Yellow

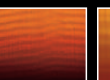


FTS Cherry Burst

FSS Umber Stain with Sunset Burst



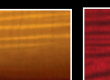
FIT Tobacco Burst



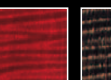
FTD Classic Burst



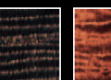
FTU Sunset Burst



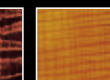
FTH Honey Burst



FSR Ruby Red Stain



FSK Black Stain



FSA Antique Brown Stain



FSU Umber Stain

FTC Clear Finish

OPTIONAL QUILTED MAPLE FINISHES \$540 \$270

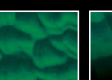
See pg 9 for Deep Triple Step colors



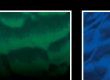
QTR Crimson Red



QTP Translucent Purple



QTG Emerald Green



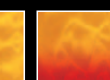
QTE Green Burst



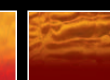
QTB Sapphire Blue



QTL Blue Burst



QTY Vintage Yellow

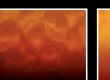


QTS Cherry Burst

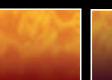
QSS Umber Stain with Sunset Burst



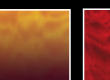
QTT Tobacco Burst



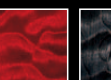
QTD Classic Burst



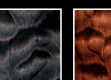
QTU Sunset Burst



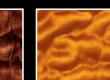
QTH Honey Burst



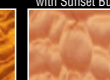
QSR Ruby Red Stain



QSK Black Stain



QSA Antique Brown Stain



QSU Umber Stain

QTC Clear Finish

**10 day money back guarantee
on Carvin Custom shop instruments**

**ORDER YOUR CUSTOM
SHOP INSTRUMENT
WITH AS LITTLE AS
20% DOWN**

Frank Gambale FG1 Carved Top

50% OFF
all options, finishes & case
Limited Time Offer!
HC16 ~~\$1285~~ \$699
Deluxe Wooden Case
with Black Tolex



photo:
Michael Hiller

"The lead tone from the FG1 is so fat, round and warm – it's crazy beautiful! Carvin built me the guitar I've always dreamed of... I LOVE this guitar". - Frank Gambale



FG1 CARVED TOP

Carvin worked very closely with Frank Gambale in the development of the FG1. This guitar is a true Carved Top Semi-Hollow Double-Cutaway instrument. The genuine Mahogany body is chambered and features a premium carved Curly-Flamed Maple top. The FG1 neck profile and heel are custom sculpted to Frank's specifications which makes for very comfortable playability and total access to all 22 frets. Frank chose the C22B pickup for the bridge and worked with Carvin to develop the FG22N neck pickup. This exquisite instrument is extremely versatile and will handle all music styles from jazz to rock.

FG1 FEATURES:

- Premium Mahogany set-in neck & body with highest quality 20mm Flamed Maple carved top
- Natural body binding effect
- Matching figured Maple headstock overlay
- 24k Gold plated CARVIN logo on headstock
- Sperzel locking tuners
- 25" scale ebony fingerboard
- Custom Frank Gambale neck profile
- Custom Frank Gambale lower neck heel
- Abalone dot inlays
- Vintage size fretwire (.043" tall x .080" wide)
- FG22N Frank Gambale neck pickup, C22B bridge pickup
- 3-way pickup selector, separate volumes and tones for each pickup
- Push pull tone controls for each pickup offer humbucker or single coil modes
- Body size: 14.1" wide, 1.85" thick at edge, 2.35" thick at center
- Back of neck and body matches translucent color of top
- Triple step, stained colors for extra depth, see page 9



FG1 OPTIONS SHOWN:
Deep Honeyburst on Flame (FDH6)
Metal Covered Neck Pickup (S22J)
Metal Covered Bridge Pickup (S22B)

Take \$100 off
LIMITED TIME OFFER

FG1
Frank Gambale Signature
List \$3899 **\$1849**

FG1T
Frank Gambale Signature
with Wilkinson Tremolo
List \$3999 **\$1889**

FG1S
Frank Gambale Signature
with Synth Access
List \$4199 **\$2149**



FG1 OPTIONS SHOWN:

- Left handed (L)
- Deep Tiger's Eye on Quilt (QDT6)
- Ivory TUSQ Nut (IVN)
- Abalone Block Inlays (AB)
- Metal Covered Neck Pickup (S22J)
- Metal Covered Bridge Pickup (S22B)
- Cream pickup bezel (402)
- Wooden Rosewood Knobs (WK)

Semi-Hollow Carved Top

Take \$100 off
LIMITED TIME OFFER

SH550

Stop Tail Piece bridge

List \$3899 **\$1769**

SH550B

Bigsby Vibrato

List \$4099 **\$1899**

SH575

Tune-O-Matic bridge
with GraphTech Synth Access

List \$4199 **\$2069**

SH575B

Bigsby Vibrato
with GraphTech Synth Access

List \$4399 **\$2199**

**TAKE \$100 OFF CE
CEDAR TOP MODELS**

As low as

\$50 per month

50% OFF

all options, finishes & case
Limited Time Offer!

HC16 \$385 \$69

Deluxe Wooden Case
with Black Tolex

SH575CE SOLID CEDAR TOP

Honeyburst (THY)

Signature Abalone Inlays (ABS)

Gold Hardware (G)

NEW!



True Semi Hollow Carved Arch Top

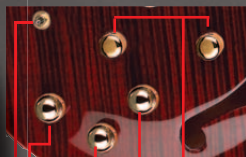
(unlike other brands with bent
plywood top, back and sides)

SH575 SYNTH ACCESS

The SH575 model has the exceptional tone of the SH550 with the addition of the acclaimed GraphTech Synth Access electronics, as featured in Carvin's breakthrough NS1 guitar. This preamp provides realistic hollow-body acoustic tone. Simply connect a guitar synth and get orchestras, flutes and virtually any instrument at your fingertips.

SH575 CARVED TOP FEATURES:

- Graphtech Hexaphonic Synth Access Pickup
- 13-pin jack for Synth and 1/4" jack for Humbuckers
- Master volume, Tone and 3-way pickup selector
- Push pull tone offers single coil operation for each pickup or both pickups together humbucking
- Concentric controls for Synth Access. See details below.



- Humbucker volume and tone with coil splitter push/pull pot
- stacked volumes for Hexaphonic Midi and piezo acoustic
- stacked mid cut/boost and mid sweep controls
- stacked treble and bass cut/boost controls
- switch scrolls through MIDI patches



outputs: 1/4 inch electric & acoustic and 13-pin MIDI
Synth jack, one 13-pin jack runs all access of the SH575 including phantom power.



C20P13

13-pin 20ft long Synth Guitar Cable

List \$79 **\$39**

SH550 OPTIONS SHOWING:
 Deep Orange on Quilt (QD06)
 Abalone Signature Inlays (ABS)

GuitarPlayer REVIEW

"Tested through a range of tube amps it exhibits plenty of power to crunch and wail when you want it to, but still retains outstanding clarity from all three humbucker settings, with decent neck/bridge output balance. The split-coil tones are extremely impressive, too: where so many sound like just half a humbucker (i.e. rather thin and wan) the Carvins perform like gnarly P-90s at full volume and snappier Fender-style single-coils with the Volume knob rolled back a touch. All in all, the SH550 is a sweet player, and a surprisingly versatile instrument. It's ideal for those who want a guitar that's more open and resonant sounding than a humbucker-equipped solidbody, and it could be the perfect choice for jazzers who seek a compact-bodied, high-end archtop that doesn't cost an arm and a leg."

— DAVE HUNTER Aug 2010



JOE WALSH



Steve Oliver

See the video at
CARVIN
 CHANNEL
carvinchannel.com



SH550 & SH575 Carved Top

These instruments are true Carved Top Semi Hollow Custom Shop masterpieces. Featuring a chambered Mahogany body with a beautifully sculpted solid Flamed Maple top that is carved both inside and out. Tone this sweet just isn't possible from a semi-hollow guitar made with thin pieces of bent plywood or veneer. The back of the body and the neck are made of hand selected genuine Mahogany for added warmth. The harmonically rich covered humbuckers ooze with deep and defined tone and sustain. Carvin's "Rapid Play" low action neck assures effortless playability throughout the entire fingerboard, while the sleek set-in neck heel and lower body cut-out allows easy uninhibited access at the 22nd fret. Whether you are a semi-hollow aficionado or a rock enthusiast, an SH series guitar would be a fine addition to your collection.

SH550CE & SH575CE Cedar Top

These new models incorporate AAAA western Cedar tops which are carved inside and out producing a warm rich tone.

SH CARVED TOP FEATURES:

- Premium Mahogany set-in neck & body
- Highest quality 20mm thick Curly-Flamed Maple carved top with natural binding effect
- Matching figured Maple headstock overlay
- 24k Gold plated CARVIN logo on headstock
- Sperzel locking tuners
- 25" scale ebony fingerboard
- Abalone dot inlays
- 22 medium jumbo frets
- 522 Classic Chrome humbuckers (optional Gold)
- Master volume and 3-way pickup selector
- Push pull tone offers single coil operation for each pickup or both pickups together humbucking
- Body size: 14.1" wide, 2.1" thick at edge, 2.6" thick at center
- Triple step, stained colors for extra depth

SH Options:

Premium quilted top (example QDB6)\$360 \$180
 Abalone block inlays (AB)\$160 \$80
 Back and edges painted black (BGB)\$60 \$30
 Black edges and black burst back (BBB)\$60 \$30
 SH550: 2 volume + 2 tone w/coil splitters (VT2) ... \$90 \$40
 For other options see page 5



SH550B OPTIONS SHOWING:
 Deep Blue on Flame (FDB6)
 Abalone Block Inlays (AB)

See the video at
CARVIN
 CHANNEL
carvinchannel.com

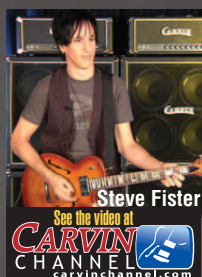
DEEP TRIPLE-STEP STAINED COLORS

(SHOWN WITH OPTIONAL QUILTED TOPS)

For standard Curly-Flame top replace Q with an F



Hershel Yatovitz
 Chris Isaak & Silverstone



800.854.2235 CARVIN.COM

California Carved Top

Take \$100 OFF
LIMITED TIME OFFER

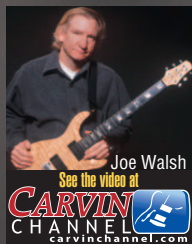
As low as
\$32 per month

50% OFF
all options, finishes & case
Limited Time Offer!
HC10 ~~\$138~~ \$69
Deluxe Wooden Case
with Black Tolex

**CT6M
CT624M**
Tune-O-Matic bridge
w/ strings thru body
List \$3599 **\$1499**

**CT6T
CT624T**
Wilkinson tremolo
List \$3649 **\$1529**

**CT6C
CT624C**
Floyd Rose tremolo
List \$3799 **\$1599**



Joe Walsh

See the video at
CARVIN CHANNEL
carvinchannel.com

CT624M OPTIONS SHOWN:
Deep Moss Green on Quilt (QDM6)
Abalone Block Inlays (AB)
Stainless Steel Frets (STF)
Black Hardware (BC)



CT624M OPTIONS SHOWN:
Deep Vintage Burst on Quilt (QDV6)
Signature Abalone Inlays (ABS)
Stainless Steel Frets (STF)
Metal Covered Neck Pickup (S22J)
Metal Covered Bridge Pickup (S22B)
Gold Hardware (G)

**CT3M
CT324M**
Tune-O-Matic bridge
w/ strings thru body
List \$2399 **\$1169**

**CT3T
CT324T**
Wilkinson tremolo
List \$2449 **\$1199**

**CT3C
CT324C**
Floyd Rose tremolo
List \$2499 **\$1269**

CT324M OPTIONS SHOWN:
Clear Satin Finish (CS)
Matching Headstock (PH)
Stainless Steel Frets (STF)
Metal Covered Neck Pickup (S22J)
Metal Covered Bridge Pickup (S22B)



**CT4M
CT424M**
Tune-O-Matic bridge
w/ strings thru body
List \$2549 **\$1219**

**CT4T
CT424T**
Wilkinson tremolo
List \$2599 **\$1249**

**CT4C
CT424C**
Floyd Rose tremolo
List \$2649 **\$1319**

CT4T OPTIONS SHOWN:
Jet Black (B)
Black sides and back (BGB)
Abalone Block Inlays (AB)

California 22 & 24 Fret Carved Tops

Carvin is proud to offer the 22 fret and 24 fret "California Carved Tops". The CT3 & CT324 have an all Mahogany body while the CT4 & CT424 feature an Eastern Maple cap. The CT6 & CT624 feature an exquisite beautifully sculpted top of the finest Curly-Flamed Maple. The back of the body and the neck are made of hand selected genuine Mahogany for added warmth. Classic C22 humbuckers are custom wound with vintage plain enamel wire which helps bring out the harmonically rich tone and sustain of this fine instrument. Carvin's "Rapid Play" low action neck assures effortless playability throughout the entire fingerboard, while the sleek set-in neck heel and lower body cutout allow easy uninhibited access. The California Carved Top is available in several different exclusive triple step stained colors, which dramatically bring out the rich highlights of our highly figured maple tops.



Neil Zaza

See the video at

CARVIN CHANNEL
carvinchannel.com



"...Carvin's CT6M flaunts an irresistible abundance of aesthetic allure...Representative of the highest level of the luthier's art, and offering great playability and great tones, the CT6M is proof positive that Carvin does indeed deserve a place alongside the world's most respected guitar builders." *Guitar Player* Dec '04

DEEP TRIPLE-STEP STAINED COLORS

(SHOWN WITH OPTIONAL QUILTED TOPS)

For standard Curly-Flame top replace Q with an F



Deep Sunsetburst (QDS6)



Deep Tiger's Eye (QDT6)



Deep Blue (QDB6)



Deep Green (QDG6)



Deep Natural Clear (QDC6)



Deep Teal (QEL6)



Deep Moss Green (QDM6)



Deep Red (QDR6)



Deep Antique Brown (QDA6)



Deep Purple (QDP6)



Deep Black (QDB6)



Deep Dragonburst (QDG6)



Deep Orangeburst (QDO6)



Deep Honeyburst (QDH6)



Deep Vintageburst (QDV6)

CARVED TOP FEATURES:

- Premium Mahogany set-in neck & body
- CT3, CT324: Body is all Mahogany
- CT4, CT424: Eastern Maple Top
- CT6, CT624: Highest quality 20mm thick curly Flamed Maple top with natural binding effect
- Matching figured Maple headstock overlay
- 24k Gold plated CARVIN logo on headstock
- Sperzel locking tuners
- 25" scale ebony fingerboard
- Abalone dot inlays
- Medium jumbo frets
- C22J and C22B classic humbuckers
- Master volume and 3-way pickup selector
- Push pull tone offers single coil operation for each pickup or both pickups together humbucking
- Triple step, stained colors for extra depth (standard with Curly-Flame Maple top)

CT3, CT324, CT4 & CT424 Options:

Not available with Flame or Quilt tops

All translucent colors listed on pg 4 are available.

GT Gold Top (CT4 & CT424 only)....\$160 \$80

CT6 & CT624 Options:

Premium quilted top (example QDB6) ~~\$360~~ \$180

Abalone block inlays (AB)\$160 \$80

Back and edges painted black (BGB)\$60 \$30

Black edges and black burst back (BBB) ..\$60 \$30

For other options see page 5

California Single



As low as
\$44 per month

**CS6M
CS624M**
Tune-O-Matic bridge
w/ strings thru body
List \$3599 **\$1499**

**CS6S
CS624S**
Tune-O-Matic bridge
w/ stop tail
List \$3599 **\$1499**

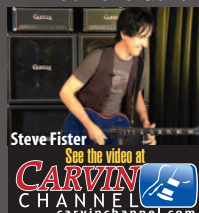
**CS6T
CS624T**
Wilkinson tremolo
List \$3649 **\$1529**

**CS6C
CS624C**
Floyd Rose tremolo
List \$3799 **\$1599**

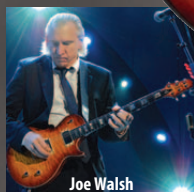
Take \$100 off
LIMITED TIME OFFER

50% OFF
all options, finishes & case
Limited Time Offer!
HC10 ~~\$28~~ **\$69**
Deluxe Wooden Case
with Black Tolex

GUITAR WORLD
"Carvin's CS6 California Single is one of the most attractive bargains in the high-end guitar market. The attention to detail, fit and finish, the exotic woods and superb playability are hard to find in any guitar, much less one that sells for around \$1,500" -Eric Kirkland
Feb 2010 Guitar World



**CS824 with 24 frets
NOW AVAILABLE**

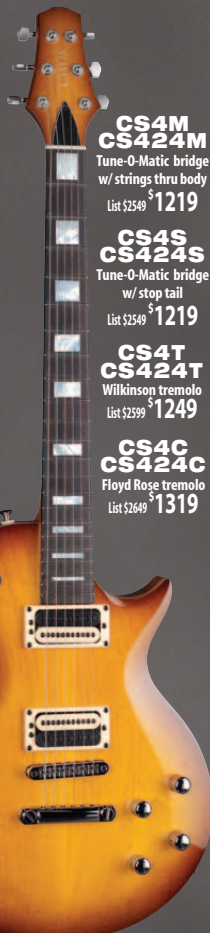


**CS3M
CS324M**
Tune-O-Matic bridge
w/ strings thru body
List \$2399 **\$1169**

**CS3S
CS324S**
Tune-O-Matic bridge
w/ stop tail
List \$2399 **\$1169**

**CS3T
CS324T**
Wilkinson tremolo
List \$2449 **\$1199**

**CS3C
CS324C**
Floyd Rose tremolo
List \$2499 **\$1269**



**CS4M
CS424M**
Tune-O-Matic bridge
w/ strings thru body
List \$2549 **\$1219**

**CS4S
CS424S**
Tune-O-Matic bridge
w/ stop tail
List \$2549 **\$1219**

**CS4T
CS424T**
Wilkinson tremolo
List \$2599 **\$1249**

**CS4C
CS424C**
Floyd Rose tremolo
List \$2649 **\$1319**

CS324M OPTIONS SHOWN:
Honey Burst (THV)
Abalone Dot Inlays (ABD)
Metal Covered Neck Pickup (S22J)
Metal Covered Bridge Pickup (S22B)

CS4S OPTIONS SHOWN:
Honey Burst (THV)
Ivory TUSQ Nut (IVN)
Mother of Pearl Block Inlays (MP)
Stainless Steel Frets (STF)
Cream/Black Coils w/ Cream Bezel (407)
2 Volume and 2 Tone Knobs (VT2)

CALIFORNIA SINGLE

Where most set-in neck guitars have a cumbersome heel and don't set into the body any further than the fingerboard, the CS guitar has an exclusive smooth "heel-less" design for improved access to all frets. The neck actually sets 5 inches into the body and extends underneath the neck pickup for amazing sustain. To top it off, the California Single is equipped with a pair of our tone enhancing Classic Humbuckers.

CALIFORNIA SINGLE:

- Premium Mahogany set-in neck & body
- CS6: Highest quality 20mm thick Curly-Flamed Maple carved top with natural binding effect
- CS4: Maple carved top with natural binding effect
- CS3: Mahogany body and top
- Matching figured Maple headstock overlay
- 24k Gold plated CARVIN logo on headstock
- Sperzel locking tuners
- 25" scale ebony fingerboard
- Abalone dot inlays
- 22 medium jumbo frets
- C22J and C22B classic humbuckers
- Master volume and 3-way pickup selector
- Push pull tone offers single coil operation for each pickup or both pickups together humbucking
- Triple step, stained colors for extra depth



**MADE IN
USA**

CS624S OPTIONS SHOWN:
Deep Clear on Quilt (QDC6)
Abalone Block Inlays (AB)
Stainless Steel Frets (STF)
Metal Covered Neck Pickup (S22J)
Metal Covered Bridge Pickup (S22B)
2 Volume and 2 Tone Knobs (VT2)
Gold Hardware (G)

Options:
Premium quilted top (example QDB6) **\$.360** \$180
Abalone block inlays (AB) **\$160** \$80
Back and edges painted black (BGB) **\$60** \$30
Black edges & black burst back (BBB) **\$60** \$30
Metal covered Neck pickup (S22J) **\$40** \$20
Metal covered Bridge pickup (S22B) **\$40** \$20
2 volume + 2 tone w/coil splitters (VT2) .. **\$80** \$40
For other options see page 5

Allan Holdsworth



HH1
Dual Pickup
Fixed bridge with Fine Tuners
List \$2599 **\$1229**

HH1X
Single Pickup
XS Trem with Fine Tuners
List \$3199 **\$1429**

My new Carvin HH1X, has a fantastic neck, fingerboard, radius, and fretwire. Along with the compact size, rigidity, and comfort that I love in a headless guitar (while still being a full 25.5 scale length) The playability and tone are amazing. I started to use the guitar on the road the week it was built. I am very happy indeed, Allan Holdsworth.

50% OFF
all options, finishes & case
Limited Time Offer!

HC7 ~~\$1185~~ **\$59**
Deluxe Wooden Case
with Black Tolex

HH2
Dual Pickup
Fixed bridge with Fine Tuners
List \$2799 **\$1299**

HH2X
Dual Pickup
XS Trem with Fine Tuners
List \$3399 **\$1499**

NEW

Take \$100 OFF
LIMITED TIME OFFER

HF2
FATBOY
Tune-O-Matic bridge
List \$2549 **\$1229**

HF2S
FATBOY
Synth Access
List \$3199 **\$1529**

As low as
\$36 per month

HH1X OPTIONS SHOWN:
Pearl Blue (PB)

HF2 OPTIONS SHOWN:
Antique Brown Stain on Quilt (QSAA)
Deep Triple Step Stain (DTS)
Matching Quilt Headstock (QPH)
No Inlays on Fingerboard (NIN)
Stainless Steel Jumbo Frets (STJF)
Black Hardware (BC)

HH1 & HH2

New for 2012 is the headless series of Allan Holdsworth guitars. These guitars employ a precision made body and neck along with the unique bridge systems from JCustom Headless Research™. Both the fixed bridge and tremolo models feature fine tuners on the bridge eliminating headstock mounted tuners.

HH1 & HH2 HOLDSWORTH FEATURES:

- Set-in hardrock maple neck
- Alder semi-hollow body
- White birch top
- Thicker Holdsworth profiled neck
- 25.5" scale ebony fingerboard w/ 20" radius
- 24 jumbo frets .055 tall x .110 wide
- Action guaranteed to be 1/16"
- JCustom Headless Research™ bridges
- Holdsworth design H22 humbuckers
- Volume, Tone and mini pickup selector
- 30.5" long, 1.7" thick body, 11" wide body
- Double ball-end strings available at carvin.com

OPTIONS:

- FTCA AAAA Flamed maple top..... \$200
- QTCA AAAA Quilted maple top..... \$300
- FKTA Flamed Koa top..... \$400
- 34 Push-pull tone coil splitter..... \$20

For colors & other options see page 5 & 6

HF2

Allan Holdsworth worked closely with Carvin in developing his signature guitars. The HF2 Fatboy model has a 2 3/8" thick body with special twin beam suspension allowing the top and back to resonate freely. The highly resonant tone of this unique guitar is incredible. The HF2 is equipped with Allan Holdsworth designed H22 Humbuckers.

HF2 FATBOY FEATURES:

- Set-in hardrock maple neck
- Alder semi-hollow body
- White birch top and back
- Fully rounded body edges
- Thicker Holdsworth profiled neck
- 25.5" scale ebony fingerboard w/ 20" radius
- 24 jumbo frets .055 tall x .110 wide
- 34 Push-pull tone coil splitter
- Sperzel™ locking tuning keys
- Holdsworth design H22 humbuckers
- 38" long, 2.4" thick body, 12.5" wide body

OPTIONS:

- FTCA AAAA Flamed maple top..... \$200
- QTCA AAAA Quilted maple top..... \$300
- FKTA Flamed Koa top..... \$400
- 34 Push-pull tone coil splitter..... \$20
- 32 Two coil splitting switches..... \$40

For colors & other options see page 5 & 6

HH2 OPTIONS SHOWN:
Deep Honeyburst on Flame (FDHA)
Gold Logo on Body (GL)

Take \$100 OFF
LIMITED TIME OFFER

DC400
FT6 fixed bridge
List \$2599 **\$1249**

DC400M
Tune-O-Matic bridge
w/ strings thru body
List \$2649 **\$1269**

DC400T
Wilkinson tremolo
List \$2699 **\$1299**

DC400B
Tune-O-Matic bridge
with Bigsby Vibrato
List \$2799 **\$1369**

DC400C
Floyd Rose tremolo
List \$2799 **\$1369**

As low as
\$36 per month

50% OFF
all options, finishes & case
Limited Time Offer!
HC10 ~~\$286~~ \$69
Deluxe Wooden Case
with Black Tolex



DC400 OPTIONS SHOWN:
Deep Orangeburst on Flame (FD04)
Tung Oiled Neck (TN)
Fishman Acoustic Saddles (FA)

DC400A
FT6 fixed bridge
List \$2999 **\$1449**

DC400MA
Tune-O-Matic bridge
w/ strings thru body
List \$3049 **\$1469**

DC400TA
Wilkinson tremolo
List \$3099 **\$1499**

DC400BA
Tune-O-Matic bridge
with Bigsby Vibrato
List \$3199 **\$1569**

DC400CA
Floyd Rose tremolo
List \$3199 **\$1569**



DC400TA OPTIONS SHOWN:
Umber Stain on Quilt (QSU4)
Black Burst Edges (BST)
Tung Oiled Neck (TN)
Diamond Abalone Inlays (DAB)
Cream & Black Pickup Coils, Black Bezel (406)
Gold Hardware (G)

DC400W
FT6 fixed bridge
List \$2999 **\$1449**

DC400MW
Tune-O-Matic bridge
w/ strings thru body
List \$3049 **\$1469**

DC400TW
Wilkinson tremolo
List \$3099 **\$1499**

DC400BW
Tune-O-Matic bridge
with Bigsby Vibrato
List \$3199 **\$1569**

DC400CW
Floyd Rose tremolo
List \$3199 **\$1569**



DC400TW OPTIONS SHOWN:
Clear Gloss (CG)
No Inlays on Fingerboard (NIN)
Stainless Steel Frets (STF)
Wooden Knobs (WK)
Gold Hardware (G)

DC400

The DC400 Series with all of its extra attention to detail and premium standard features represents Carvin's finest neck through six string solid body. Create your own custom DC400 by choosing from a host of options such as a tung oiled neck, headstock style, fret wire, pickup color and even your own custom engraved truss rod cover.

- Maple neck through alder body
- AAAA flamed maple top
- AAAA flamed head stock overlay
- Abalone block inlays
- Flamed translucent colors (N/C)
- C22J & C22B humbuckers
- 502G ACTIVE/PASSIVE ELECTRONICS:
Pickup selector, 2 Dual/single coil switches and a Phase switch. Passive mode includes master volume & passive tone control. Active mode includes master volume, active cut/boost for bass & treble.
- 24k Gold plated CARVIN logo on headstock

DC400 OPTIONS:

DC400 OPTIONS:
RB Fully Rounded Body Edges.....\$80
FA Acoustic bridge saddles\$200
QTC4 Quilted top & headstock \$180
FK4 Flame Koa top & headstock \$180
For colors & options see page 5 & 6

DC400A ANNIVERSARY

The Anniversary Model has all of the outstanding amenities of the DC400 but includes a five piece maple/walnut neck and three piece laminated body to further enhance its appeal.

- AAAA flamed maple top
- 3 piece laminated body with fully rounded edges
- 5 piece Maple & Walnut neck through alder body
- 25" Ebony fingerboard with 24 frets
- Smooth neck to body heel
- Abalone block inlays
- Any flamed Maple color or stain

DC400A OPTIONS SAME AS DC400 with:

FPH4 Flame Headstock..... N/C
NS Five piece neck is covered by figured top \$80

DC400W CLARO WALNUT

The DC400W features an awesome figured Claro Walnut top and 5-piece neck. This combination of exotic woods produces a wonderful tone.

- AAAA Claro Walnut top
- 3 piece Claro Walnut/Alder/Walnut body with fully rounded edges
- 5 piece maple/walnut laminated neck

DC400W OPTIONS SAME AS DC400 PLUS:

FPH4 Flame Headstock..... N/C
NS Five piece neck is covered by figured top \$80

DC400C OPTIONS SHOWN:
Deep Orangeburst on Quilt (QD04)
Black Painted Headstock (BPH)
Pointed Inline Reversed Headstock (PTHR)
Lock Nut for Floyd Rose (LN)
Stainless Steel Jumbo Frets (STJF)
Gold Hardware (G)

Take \$100 OFF
LIMITED TIME OFFER

As low as
\$25 per month

TLB60

FT6 fixed bridge

List \$1899 **\$799**

TLB60-T

Wilkinson tremolo

List \$1999 **\$849**

TLB60-V

Vintage tremolo

List \$1999 **\$849**

50% OFF

all options, finishes & case
Limited Time Offer!

HC10 ~~\$138~~ \$69
Deluxe Wooden Case
with Black Tolex

**MADE IN
USA**



Contoured neck heel

C66

FT6 fixed bridge

List \$2179 **\$1069**

C66M

Tune-O-Matic Bridge
w/ strings fed thru body

List \$2279 **\$1089**

C66T

Wilkinson tremolo

List \$2279 **\$1119**

C66V

Vintage tremolo

List \$2279 **\$1119**

C66B

Tune-O-Matic bridge
with Bigsby Vibrato

List \$2379 **\$1189**

C66C

Floyd Rose tremolo

List \$2379 **\$1189**



C66T OPTIONS SHOWN:
Burl Maple Top (UM4)

Matching Burl Maple Headstock (UMPH) N/C
Abalone Signature Inlays (ABS)
Abalone Headstock Logo (ABL)
Abalone Knobs (AK)
Gold Hardware (G)

TLB60 OPTIONS SHOWN:

Classic White (W)
Sperzel Locking Tuners (SP)
Bird's Eye Maple Fingerboard (BMF)
Abalone Dot Inlays (ABD)

TLB60

Carvin's bolt-on-neck "TL" model brings all of the features that made the Bolt model a high end USA made guitar at killer factory direct pricing. The TLB60 provides ergonomic comfort with body and arm cuts as well as the contoured neck heel. The single cutaway provides comfortable access to all 22 frets. Carvin's Rapid Play™ bolt-on neck is available in various radii with your choice of fingerboard woods, fretwire and inlays. Choose from Carvin's S60A vintage style single coils, AP11 single coils or Twin Blade humbuckers or add a full size humbucker at the bridge.

- Premium grade alder wood body
- Precise fitting neck pocket for added sustain
- 25 1/2" ebony fingerboard with dot inlays
- Tung oil finish on hard rock maple neck
- SB style, tilt back headstock for crisp open notes
- Premium Carvin tuners
- Three S60A single coils for clear vintage tone (black covers standard)
- 5-way pickup selector plus a mini switch allows all 7 pickup combinations
- Master volume & tone
- White multi-layer pickguard
- Colors: black, white, red, pearl blue, tung oil, clear gloss

TLB60 OPTIONS:

SP	Sperzel Locking Tuners \$60
PH	Matching painted headstock \$60
A11	AP11 Single Coil Pickups N/C
TBH	Twinblade Humbuckers (TBH4 Cream/Black)	\$20
22B	C22B bridge humbucker w/ coil splitter	\$30
BG	Black multi-layer pickguard \$10
WP	White pearloid multi-layer pickguard	\$30
RP	Red tortoise multi-layer pickguard	.. \$30

For colors and other options see pgs 5 & 6

CONTOUR 66

The "Contour 66" has features and attention to detail that place it among the finest and most elite instruments made. The 5mm thick premium flamed maple drop top is set off at the edges of the body to highlight the figured maple binding effect. The sweeping body curves also add to the striking looks and effortless playability.

- Premium grade alder wood body
- AAAA flamed maple drop top and headstock
- Flamed maple body binding effect
- Precise fitting neck pocket for added sustain
- 25.5" scale ebony fingerboard with dot inlays
- Tung oil satin finish hard rock maple neck
- Tilt back headstock for crisper open notes
- Sperzel™ Locking Tuners
- Two direct mount C22 humbucking pickups
- 5-way pickup selector allows neck humbucking, neck single coil, neck and middle single coils combined for humbucking, bridge single, bridge humbucking
- Master volume & tone
- Any Flamed Maple Translucent color (pg 6)

C66 OPTIONS:

QTC4	Quilted Top and Headstock upgrade\$180
CAP	Center S60A single coil (cream CAP2)\$80
CTB	Center Twin Blade humb. (CTB6 Cream/Black)\$80
HSS	Neck & mid single coil & bridge humb.\$60
FA	Acoustic Bridge saddles\$200
ACA	Active electronics (required for FA)\$120
AC	Active/passive electronics as on DC400\$120

TLB60V OPTIONS SHOWN:

Swamp Ash Body (ASH)
Honeyburst (THY)
Rosewood Fingerboard (RWF)
Abalone Dot Inlay (ABD)
Stainless Steel Frets (STF)
Black Pickguard (BG)
Gold Hardware (G)

As low as
\$22 per month

BOLT

FT6 fixed bridge

List \$1699 **\$799**

BOLT-T

Wilkinson tremolo

List \$1799 **\$849**

BOLT-V

Vintage tremolo

List \$1799 **\$849**

BOLT-C

Floyd Rose tremolo

List \$1899 **\$919**

Take \$100 OFF
LIMITED TIME OFFER

50% OFF
all options, finishes & case
Limited Time Offer!
HC10 ~~\$128~~ \$69
Deluxe Wooden Case
with Black Tolex

**MADE IN
USA**



Contoured neck heel



BOLT-V OPTIONS SHOWN:
Honeyburst (THY)
Swamp Ash Body (ASH)
Sperzel Locking Tuners (SP)
Rosewood Fingerboard (RWF)
Abalone Dot Inlays (ABD)
White Pearlloid Pickguard (WP)

BOLT OPTIONS SHOWN:
Radiation Green (RG)
White Pearlloid Pickguard (WP)
Twin Blade Humbuckers - Cream and Black (TBH6)
C22 Bridge Humbucker (22B)
Cream C22 Humbucker (402)
Gold Hardware (G)

BOLT-T OPTIONS SHOWN:
Honeyburst (THY)
Swamp Ash Body (ASH)
Bird's Eye Maple Fingerboard (BMF)
Abalone Dot Inlays (ABD)
Stainless Steel Frets (STF)
White Pearlloid Pickguard (WP)
Abalone Knobs (AK)
Abalone Headstock Logo (ABL)
Gold Hardware (G)

BOLT-C OPTIONS SHOWN:
Classic White (W)
Lock Nut for Floyd Rose (LN)
Painted Headstock (PTH)
White Truss Rod Cover (TCW)
Sperzel Locking Tuners (SP)
C22 Bridge Humbucker (22B)
White Pickup Covers/Coils (404)

**Now available with
Floyd Rose Tremolo**

THE BOLT

Carvin's Bolt models have been improved with new features that really improve the playability such as much deeper contoured arm cuts, rear body tummy cuts and a new contoured neck heel. The perfectly fit neck to body joint aids in sustain and tuning stability. The Bolt offers features and custom shop options unavailable from any other USA guitar company.

- Premium grade alder wood body
- Precise fitting neck pocket for added sustain
- 25 1/2" ebony fingerboard with dot inlays
- Tung oil finish on hard rock maple neck
- Tilt back headstock for crisp open notes
- Premium Carvin Tuners
- Three S60A single coils for clear vintage tone (black covers standard)
- 5-way pickup selector plus a mini switch allows all seven pickup combinations
- Master volume & tone
- White multi-layer pickguard
- Colors: black, white, red, pearl blue, tung oil, clear gloss

BOLT OPTIONS:

SP Sperzel Locking Tuners \$60
PH Matching painted headstock \$60
A11 AP11 Single Coil Pickups N/C
TBH Twinblade Humbuckers (TBH4 Cream/Black) \$20
22B C22B bridge humbucker w/ coil splitter \$30
BG Black multi-layer pickguard \$10
WP White pearlloid multi-layer pickguard \$30
RP Red tortoise multi-layer pickguard .. \$30
For colors and other options see pgs 5 & 6

CUSTOMER COMMENT

I was blown away! The workmanship and playability were unmatched, the sound: incredible, AND it was built to my specs. This thing is a Tone Monster. The amazing thing to me is that I bought a supposed 'low-end model' Carvin Bolt-T that beat the pants off a 'high-end' Fender®!
— Lee Scott Howard

Take \$100 off
LIMITED TIME OFFER

As low as
\$26 per month

ST300
FT6 fixed bridge
List \$1899 **\$899**

ST300M
Tune-O-Matic bridge
w/ strings thru body
List \$1949 **\$919**

ST300T
Wilkinson tremolo
List \$1999 **\$949**

ST300B
Tune-O-Matic bridge
with Bigsby Vibrato
List \$2099 **\$1019**

ST300C
Floyd Rose tremolo
List \$2099 **\$1019**

DC127
FT6 fixed bridge
List \$1899 **\$899**

DC127M
Tune-O-Matic bridge
w/ strings thru body
List \$1949 **\$919**

DC127T
Wilkinson tremolo
List \$1999 **\$949**

DC127B
Tune-O-Matic bridge
with Bigsby Vibrato
List \$2099 **\$1019**

DC127C
Floyd Rose tremolo
List \$2099 **\$1019**

DC135
FT6 fixed bridge
List \$1899 **\$899**

DC135M
Tune-O-Matic bridge
w/ strings thru body
List \$1949 **\$919**

DC135T
Wilkinson tremolo
List \$1999 **\$949**

DC135B
Tune-O-Matic bridge
with Bigsby Vibrato
List \$2099 **\$1019**

DC135C
Floyd Rose tremolo
List \$2099 **\$1019**

DC145
FT6 fixed bridge
List \$1899 **\$929**

DC145M
Tune-O-Matic bridge
w/ strings thru body
List \$1949 **\$949**

DC145T
Wilkinson tremolo
List \$1999 **\$979**

DC145B
Tune-O-Matic bridge
with Bigsby Vibrato
List \$2099 **\$1049**

DC145C
Floyd Rose tremolo
List \$2099 **\$1049**

50% OFF
all options, finishes & case
Limited Time Offer!
HC10 ~~\$138~~ **\$69**
Deluxe Wooden Case
with Black Tolex

DC127C options shown:
Umber Stain on Quilt (QSU)
Deep Triple Step Stain (DTS)
Matching Quilt Headstock (QPH)
Rosewood Fingerboard (RWF)
Diamond Abalone Inlays (DAB)
Fully Rounded Body Edges (RB)
Cream & Black Pickup Coils, Black Bezel (406)
Gold Hardware (G)
Gold Headstock Logo (GL)

DC135M options shown:
Mahogany Neck and Body (NMAH)
Black Burst Edges (BST)
Bird's Eye Maple Fingerboard (BMF)
AP11 Single Coil Pickups (A11)

DC145C options shown:
Left Handed (L)
Deep Dragon Burst on Quilt (QDD)
Matching Quilt Headstock (QPH)
Mahogany Neck and Body (NMAH)
Abalone Headstock Logo (ABL)
Reverse Inline Headstock (RIN)
Lock Nut for Floyd Rose (LN)
Rosewood Fingerboard (RWF)
Abalone Signature Inlays (ABS)
Stainless Steel Jumbo Frets (STFJ)
Rounded Body Edges (RB)
Metal Knobs with Abalone Inlays (AK)
Black Hardware (BC)

ST300 DC127

The DC127 is one of Carvin's best selling solid body electric guitars because of features like neck through body construction, Sperzel locking tuners, and the versatility of the C22 pickups with dual to single switching. The ST300 combines the classic body styling of our early 90's DC series with contemporary options and features.

DC127 & ST300 FEATURES:
(See page 5 for neck through body features)

- Maple 24 fret neck through alder body
- Smooth neck to body heel
- C22J & C22B humbuckers
- DC127 Volume, tone & 3-way selector & two dual-to-single coil switches
- ST300 Volume, tone & 5-way selector/coil splitter
- FT6 fixed bridge standard; M bridge, Bigsby vibrato, Floyd Rose tremolo, & Wilkinson tremolo available
- Chrome hardware standard

DC127 & ST300 OPTIONS:

FA Acoustic bridge saddles see pg. 4 \$200
ACA Active electronics (required for FA) \$120
AC DC400 active/passive electronics \$120

DC135 DC145

The DC135 has tonal variations perfect for both rhythm and lead. The S60A single coil pickups provide great rhythm tones and are humbucking when played together. The bridge C22B is ideal for leads. As an option you can replace the S60A's with TBH twin blade humbuckers. The DC145 is the same except the neck pickup is a C22 Humbucker and it's equipped with a 5-way switch.

DC135 FEATURES

(See page 5 for neck through body features)

- Maple neck through alder body
- Smooth neck to body heel
- Two S60A's & one C22B bridge humbucker
- Master volume & tone
- Three on/off switches give 7 different pickup combinations

DC135 OPTIONS:

A11 AP11 Single Coil Pickups N/C
TBH Twinblade Humbuckers-Black \$20
TBH-6 Twinblade Humbuckers-Cream/Black \$20
26 5-way lever replaces 3 on-off switches \$20
29 5-way lever sw & 3 S60A's (angled bridge pu) \$20
31 Coil splitter for C22 \$30

For colors & other options see page 5 & 6

ST300M options shown:
Crimson Red on Quilt (QTR)
Deep Triple Step Stain (DTS)
Matching Quilt Headstock (QPH)
Abalone Dot Inlays (ABD)
Stainless Steel Frets (STF)

"This remarkable-sounding instrument is deep and clear, with nice stringiness and spank. Notes sound round and harmonically detailed in humbucker mode, and the single-coil selections are bright and punchy. The DC127T is one chunky and intense beast in super-high-gain conditions, and even the most heavily saturated chords retain definition. A very versatile guitar that can easily cover rock, blues or country duties."

-Art Thompson, Joe Gore, & Cris Gill - Feb 1995 *Guitar Player*



NEW!

DC800M

Hardtail bridge
w/ strings thru body

List \$2199 **\$1099**

As low as

\$30 per month

Take \$100 OFF

LIMITED TIME OFFER

50% OFF

all options, finishes & case

Limited Time Offer!

HC28 ~~\$138~~ \$69

Deluxe Wooden Case
with Black Tolex



DC800 OPTIONS SHOWING:

Jet Black (B)
Clear Satin Finish (CS)
Abalone Dot Inlays (ABD)
Black Hardware (BC)

DC700M OPTIONS SHOWING:

Deep Orangeburst on Quilt (QD04)
Matching Quilt Headstock (QPH)
Diamond Mother of Pearl Inlays (DMP)
Black Hardware (BC)

DC700C OPTIONS SHOWING:

Blue Burst on Flame (FTL)
Flame Headstock (FPH) Non painted (NPH)
Locking Nut for Floyd Rose™ (LN)
5-piece Maple/Walnut Neck (SMW)
Flame Maple Fingerboard (FMF)
No Inlays on Fingerboard (NIN)
Abalone Headstock Logo (ABL)

DC700M

Tune-O-Matic bridge
w/ strings thru body

List \$2199 **\$999**

DC700C

Licensed Floyd Rose

List \$2349 **\$1069**

50% OFF

all options, finishes & case

Limited Time Offer!

HC10 ~~\$138~~ \$69

Deluxe Wooden Case
with Black Tolex

DC800

The new DC800 is much more than a 7-string guitar with an extra string. We've designed this model from the ground up with the 8-string guitarist in mind. An extended 27" scale fingerboard with a flat 20" radius, new active A80 pickups, comfortable deep arm cut and belly cut and many more features make the DC800 the 8-string guitar players have been waiting for. The DC800 is a neck-through design, with maple neck and alder body standard. It features a new 8-string hardtail bridge that is fully adjustable. Hundreds of Custom Shop options allow you to build your new DC800 exactly the way you want it to suit your personal tastes.

DC800 FEATURES:

(See page 5 for neck through body features)

- Maple neck through alder body
- Smooth neck to body heel
- Straight Body Edges on top
- Extra deep stomach relief cut
- Generous top arm cut for comfort
- 27" scale ebony fingerboard with 20" radius
- 24 Medium Jumbo frets
- Sperzel™ locking tuners
- Neck: 2.15" wide at nut, 3.03" wide 24" fret
- A80N and A80B humbucking pickups
- Active electronics with volume, tone, 3-way pickup selector

For colors & other options see page 5 & 6

DC700

The DC700 active seven-string guitar has several new features, including a new headstock shape, and sculpted body for more comfortable playing. A 14" radius fingerboard with 24 frets and 25.5" scale length make for fast playing, while our heel-less neck-through design allows easy access high on the fingerboard. The standard bridge is our Tune-o-Matic M bridge, which sets the heavy studs deeper in the body for great sustain. Completely new A70N neck and A70B bridge humbucking pickups, along with active electronics, provide the tone guitarists are seeking. Build your own custom DC700 seven string with Carvin's vast array of cool custom options.

DC700 FEATURES:

(See page 5 for neck through body features)

- Maple neck through alder body
- Smooth neck to body heel
- Sculpted Body Edges
- Extra deep stomach relief cut
- Generous top arm cut for comfort
- 25 1/2" scale ebony fingerboard with 14" radius
- 24 Medium Jumbo frets
- Sperzel™ locking tuners
- Neck: 1.9" wide at nut, 2.6" wide 24" fret
- A70N and A70B humbucking pickups
- Active electronics with volume, tone, 3-way pickup selector

For colors & other options see page 5 & 6

DC800 OPTIONS SHOWING:

Deep Orangeburst on Quilt (QD04)
Matching Quilt Headstock (QPH)
No Inlays on Fingerboard (NIN)
Gold Hardware (G)

As low as
\$28 per month

CC275
Semi-Hollow
Craig Chaquico
Signature Acoustic
List \$2499 **\$1249**

CC275-12
12-string Semi-Hollow
Craig Chaquico
Signature Acoustic
List \$2699 **\$1319**



CC275 Craig Chaquico Signature Model

Clear Gloss on Flame (FTC4) N/C
Gold Hardware (G)

CC275

The CC275 semi-hollow acoustic has the advantage over full sized acoustics with superior natural acoustic tone when plugged-in, without feedback or a boomy bottom end. The CC275 Craig Chaquico signature model is upgraded with the Eagle inlays, flame maple top and body binding. For AC275 model, see carvin.com.

CC275 FEATURES:

- AAAA Flame Maple top
- Mahogany neck-through-body construction
- 25" scale Ebony Fingerboard
- Multi-layer body binding
- 24 Medium-Jumbo Frets • Eagle Mother of Pearl Inlays
- Traditional 3+3 headstock
- Sperzel™ locking tuners
- Pickup: LR Baggs ribbon acoustic
- Active electronics: Master volume, Separate bass and treble boost/cut controls
- Strings: Elixir NanoWeb™ light gauge bronze
- Neck width at nut: 1 11/16"
- Body thickness: 1 7/8" • Body width: 14"

CC275 OPTIONS:

QTC4 AAAA Quilted maple top.....	\$180
FK4 Flamed koa top 1/8" thick.....	\$280
FW4 Figured Walnut top 1/8" thick.....	\$40
ABCC Optional Abalone Eagle Inlays.....	\$80

For colors & other options see page 5 & 6

SH60
Semi-Hollow Electric
Strings Fed thru Body
List \$1999
\$949

SH60B
Semi-Hollow Electric
Bigsby Vibrato
List \$2199
\$1069

50% OFF
all options, finishes & case
Limited Time Offer!

HC10 ~~\$138~~ \$69
Deluxe Wooden Case
with Black Tolex

SH65
Semi-Hollow
Acoustic/Electric
Strings Fed thru Body
w/ Synth Access
List \$2599 **\$1249**

SH65B
Semi-Hollow
Acoustic/Electric
Bigsby Vibrato
w/ Synth Access
List \$2799 **\$1369**

**SEMI-HOLLOW
ACOUSTIC/ELECTRIC
W/ SYNTH ACCESS**



SH60B OPTIONS SHOWN:
Honeyburst (THV)
Abalone Diamond Inlays (DAB)
Metal Covered Neck Pickup (S22J)
Metal Covered Bridge Pickup (S22B)
Abalone Logo (ABL)

SH65 OPTIONS SHOWN:
Deep Honeyburst on Quilt (QDHA)
Matching Quilt Headstock (OPH)
Carved Top Shaped Headstock (CTH)
Rosewood Fingerboard (RWF)
Body Binding (BB)
Metal Covered Neck Pickup (S22J)
Metal Covered Bridge Pickup (S22B)

AE185 OPTIONS SHOWN:
Deep Orange Burst on Flame (FDOA)
Matching Flame Headstock (FPH)
Abalone Dot Inlays (ABD)
Body Binding (BB)
Metal Covered Neck Pickup (S22J)
Metal Covered Bridge Pickup (S22B)
Coil Splitters and Phase Switches (38)
Gold Hardware (G)

Take \$100 OFF
LIMITED TIME OFFER

SH60 SH65

The SH60 & SH65 provide guitarists yet another flavor of single cut design. Although similar in looks to the TL60, the body is chambered for true semi-hollow resonance. Both models feature dual humbuckers and a tune-o-matic bridge. The SH65 adds the Graph Tech™ system for true acoustic tone and amazing synth tracking. This is the same system as featured on the acclaimed SH575.

FEATURES:

(See page 5 for neck through body features)

- 5mm Eastern Maple Top
- Maple neck through alder body
- Smooth neck to body heel
- 24 medium jumbo frets
- Inline Headstock
- Two C22 Humbuckers
- Master volume and 3-way pickup selector
- Push pull tone offers single coil or humbucking
- SH65: See SH575 pg 6 for Synth Access control features

SH60/SH65 OPTIONS:

NMAH Mahogany neck and body.....	\$200
FTCA AAAA Flamed maple top.....	\$200
QTC4 AAAA Quilted maple top.....	\$300
KTA Premium Koa top 1/8" thick.....	\$200
FKTA Flamed koa top 1/8" thick.....	\$400
FWTA Figured Walnut top 1/8" thick.....	\$200
BB Multi-layer tortoise body binding.....	\$160
BBE Natural body binding effect.....	\$120

For colors & options see page 5 & 6

AE185

This very popular 24 fret neck-through instrument allows you to jump from your favorite lead to an acoustic sound instantly. The semi-hollow AE185's sweet acoustic tone compliments both the electric & acoustic realms of this versatile guitar. Each pickup system features it's own tone control and output jack. Send your acoustic and electric signals to individual amps or out one cable. The blend control pans between each signal for custom hybrid tones.

AE185 FEATURES:

(See page 5 for neck through body features)

- 3mm AAA Engleman Spruce top
- Mahogany neck-through-body
- 24 Medium Jumbo Frets
- Traditional 3+3 headstock
- Sperzel™ locking tuners
- Pickups: C22J, C22B & LR Baggs ribbon acoustic
- Active electronics: Master volume, 3-way selector & active tone control for the electric pickups. Separate active tone control for the F60 acoustic pickup. Pan control to blend between electric & acoustic pickups. Dual output jacks allow you to separate the electric and acoustic signals, or combine them into one jack.
- Guitar weight: 6 1/4 lbs. Body Thickness: 1 1/4"
- Strings: 1046E Elixir NanoWeb™ strings

AE185 OPTIONS:

CE Cedar top 1/8" thick.....	\$20
FTCA AAAA Flamed maple top.....	\$180
QTC4 AAAA Quilted maple top.....	\$270
KTA Premium Koa top 1/8" thick.....	\$200
FKTA Flamed koa top 1/8" thick.....	\$400
FWTA Figured Walnut top 1/8" thick.....	\$200
IN Inline headstock.....	\$20
BB Multi-layer tortoise body binding.....	\$160
BBE Natural body binding effect.....	\$120
38 2 coil taps and 1 phase switch.....	\$60

For colors & options see page 5 & 6

As low as
\$42 per month

NS1

Thin-Line Acoustic
List \$2799 **\$1399**

Steve Oliver



Check out Steve's demo
at Carvin.com/ns1

Carvin worked with top
Billboard guitarist,
Steve Oliver for 2 years
to develop the NS1.



Felipe Staiti
Enanillos Verdes

CL450

Emerald Green on Quilt
(QTGA)
Deep Triple step Stain
(DTS)
Matching Quilt
Headstock (QPH)



CL450

List \$2599

\$1269

The CL450 is a traditional nylon string classical guitar with improved tone and playability over standard full body classicals. The Cedar top is uniquely fan braced for optimal classic tone both plugged and unplugged. The natural tone of the CL450 will please even the most critical classical guitarist.

CL450 FEATURES:

same as NS1 except

- AAA Cedar top with fan bracing
- Mahogany set-in-neck (smooth neck heel)
- Mahogany body sides and back (braced)
- Multi-Layer Tortoise Body Binding
- Pickup: Fishman® Acoustic Matrix
- Active electronics Fishman® Prefix™ Pro: Master volume, 4 band EQ, notch filter, phase switch and battery status LED.
- Body thickness: 2 1/2" • Body width: 14"
- Guitar weight: 4 3/4 Lb.

OPTIONS:

- FTCA AAAA Flamed maple top . . \$160
- QTCA AAAA Quilted maple top . . \$250
- FKTA Flamed koa top \$300
- FWTA Figured Walnut top \$160

Inlay options not available for CL450

For colors & options see page 5 & 6



50% OFF
all options, finishes & case
Limited Time Offer!

HC16 ~~\$128~~ **\$69**
Deluxe Wooden Case
with Black Tolex



outputs: 1/4 inch acoustic
and 13-pin MIDI compatible
with synth controllers such
as Roland® & Axon®



C20P13

13-pin 20ft long Synth Guitar Cable

List \$79 **\$39**

NS1 OPTIONS SHOWN:

- Deep Honeyburst on Flame (FDH4)
- Matching Flame Headstock (FPH4)

NS1 NYLON SYNTH ACCESS

The NS1 Nylon guitar features Carvin's extraordinary workmanship and playability. Carvin worked very closely with Graph Tech™ when developing the pickup system for the NS1. The real magic comes when you plug the NS1 into a guitar synth using a 13 pin cable. This provides both synth and acoustic sounds, as well as phantom power using the one 13-pin cable. The NS1 offers the newest cutting edge technology to bring an awesome sounding acoustic piezo system together with the fastest MIDI access tracking available.

NS1 FEATURES:

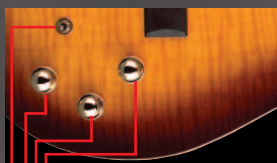
- 4A Flame Maple top with wood body binding effect
- Mahogany neck thru body (smooth neck heel)
- Chambered Mahogany body
- Ebony Fingerboard with semi-flat 20" radius
- 25.5 inch scale with 21 Medium-Jumbo Frets
- Pickup: Graphtech Hexaphonic
- Gold Plated Hardware & Carvin logo
- Neck width at nut: 1 7/8" • Body thickness: 2"
- Body width: 14" • Guitar weight: 6 1/2 Lbs.

OPTIONS:

- WK Optional Wooden Knobs \$10
- QTC4 AAAA Quilted maple top . . . \$180
- FK4 Flame Koa top \$280
- FW4 Figured Walnut top \$40

Inlay options not available for NS1

For colors & other options see page 5 & 6



- Pre-amp electronics
- stacked volumes for Hexaphonic Midi and piezo
- stacked mid cut/boost and mid sweep controls
- stacked treble and bass cut/boost controls
- switch scrolls through MIDI patches



Take \$100 off
LIMITED TIME OFFER

AC375 OPTIONS SHOWN:

- Figured Walnut Top (FWTA)
- Matching Walnut Headstock (FWPH)
- Gold Hardware (G)

AC375

List \$2599

\$1269

The AC375 is a true acoustic with remarkably full tone for its relatively thin 2 1/2" thick acoustic body. Unplugged, it projects a clear vibrant tone. Plugged in, it has the perfect balance of acoustic resonance and warmth to project a beautiful tone, surpassing that of the most expensive large body acoustic.

- AAA Engleman Spruce Top with internal X-bracing
- Mahogany set-in neck (smooth neck heel)
- Mahogany body sides and back (braced)
- Multi-Layer Tortoise Body Binding
- Traditional 3+3 headstock
- 25 1/2" scale Ebony Fingerboard
- 21 Medium-Jumbo Frets
- Sperzel™ locking tuners
- Pickup: Fishman® Acoustic Matrix
- Active electronics Fishman® Prefix™ Pro: Master volume, 4 band EQ, notch filter, phase switch and battery status LED.
- Strings: Elixir NanoWeb™ light gauge bronze
- Neck width at nut: 1 3/4"
- Body thickness: 2 1/2" • Body width: 14"

OPTIONS:

- CE Cedar top 1/8" thick \$20
- FTCA AAAA Flamed maple top \$200
- QTCA AAAA Quilted maple top \$300
- KTA Premium Koa top 1/8" thick \$200
- FKTA Flamed koa top 1/8" thick \$400
- FWTA Figured Walnut top 1/8" thick \$200



"A fine hand crafted acoustic guitar"
Cobalts are available for immediate shipment

C980T

- Jumbo cutaway body
- AA solid Spruce top
- Rosewood back & sides
- Satin finish neck
- High gloss body
- Abalone body & sound hole trim
- Abalone diamond inlays
- Fishman Matrix pickup
- Fishman Prefix Plus-T
- Built-in tuner
- Gold plated Grover tuners

List \$1739

~~\$849~~

\$749

C980TMW

- same as C980 except
- Maple back and sides
- Gloss Black Finish

see Mark Willis photo below

List \$1739

~~\$849~~

\$749

Built-In Tuner!

C980T12

· 12 string model

List \$1839

~~\$899~~

\$799



Colorful Abalone surrounds the body edges and sound hole



GB80 Acoustic Gig Bag
\$48



Fishman Prefix Plus-T preamp for superb electric tone. Built-in tuner



Eddie Bush - One Flew South

\$100
INSTANT REBATE
PLUS FREE CASE
LIMITED TIME OFFER

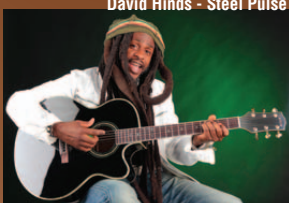
Carvin is proud to offer the Cobalt Series of acoustic guitars. These fine acoustics are carefully hand-crafted overseas to our strict and exact specifications. Premium selected woods and the Cobalt's special X-bracing yields a sweet acoustic tone with superb depth and brilliance. The Rapid Play™ low-action neck provides unmatched comfort and playability. The single cut-away models feature the Fishman® Matrix™ pickup and Prefix Plus™ preamp for awesome flexibility—plugged or unplugged. Many will be hard pressed to find another acoustic that plays, sounds and offers the same high-end quality and features at an equivalent price.

Carvin Cobalt Series Acoustics Feature:

- AA grade premium selected woods
- Dreadnought body models (20" long x 15.5" wide)
- Jumbo body models (20" long x 16.25" wide)
- Special X-bracing for clear tone & resonance
- Solid Mahogany neck with smooth Satin finish
- Dovetail neck joint for superior sustain
- Bound Rosewood headstock with inlaid Carvin logo
- Bound 25.4" scale Rosewood fingerboard
- Rapid Play™ low action neck w/ adjustable truss rod
- 20 medium .078" wide x .043" tall acoustic frets
- Ebony bridge pins with Abalone inlays
- Upper and Lower body strap buttons
- Grover™ chrome tuners
- Precise Carvin set-up & intonation



Platinum selling & ACM award winner Mark Willis with his Gloss Black C980MW
See Mark on the Carvin DVD
carvin.com/DVD



David Hinds - Steel Pulse

HC22

Jumbo
Hardshell case

~~\$138~~
FREE



Kenny Olson - Kid Rock

5 Year Warranty

All Carvin Cobalt guitars carry a 5 year limited warranty against manufacturing defects.

FREE CASE
with guitar purchase
LIMITED TIME OFFER

Custom Shop options not available on Cobalt Series

800.854.2235 CARVIN.COM



C250

- Dreadnought body
- AA solid Spruce top
- Mahogany back & sides
- Satin finish neck
- High gloss body

OPTIONS

- C250LH left hand with satin body and neck

list \$979

~~\$489~~
\$389

Left hand model Available



C250S

- Dreadnought body
- AA solid Cedar top
- Mahogany back & sides
- Satin finish neck
- Satin finish body

list \$979

~~\$489~~
\$389

As low as \$15 per month



C350

- Dreadnought body
- Solid Mahogany top
- Mahogany body
- Satin finish neck
- High Gloss body

C350S Satin finish

list \$999

~~\$499~~
\$399



Premium Mahogany body & neck.

RAPID PLAY ACTION NECK



The Rapid Play™ neck provides low action easy playing.



Ray Bailey



C770T

- Dreadnought body with Cutaway
- AA solid Mahogany top
- Mahogany back & sides
- Satin finish neck
- High gloss body
- Fishman Matrix pickup
- Fishman Prefix Plus
- Built-in tuner

OPTIONS

- C770TS Satin finish

list \$1399

~~\$679~~
\$579

Built-In Tuner!



Buy if you want a stage-ready, great sounding, awesome playing \$2000 guitar, but your budget will only bear a fraction of that price. Nov 2010



C750T

- Dreadnought body with Cutaway
- AA solid Spruce top
- Mahogany back & sides
- Satin finish neck
- High gloss body
- Fishman Matrix pickup
- Fishman Prefix Plus
- Built-in tuner

OPTIONS

- C750TS Satin finish

list \$1399

~~\$679~~
\$579

Built-In Tuner!



C850T

- Dreadnought body with Cutaway
- AA solid Spruce top
- Rosewood back & sides
- Satin finish neck
- High gloss body
- Abalone sound hole
- Fishman Matrix pickup
- Fishman Prefix Plus
- Built-in tuner

OPTIONS

- C850TLH left hand

list \$1499

~~\$749~~
\$649

